

# The Madison

2 story | 3,228 SF under AC Space | 4,418 SF Total Space  
5 bed | 5.5 bath | study | 3 car garage | pool with spa



## Home Style Options



Signature Edition



Select Edition



Elements Edition

Rear Elevation



Right Elevation



Left Elevation







GROUND FLOOR PLAN



2ND FLOOR PLAN

# The Madison

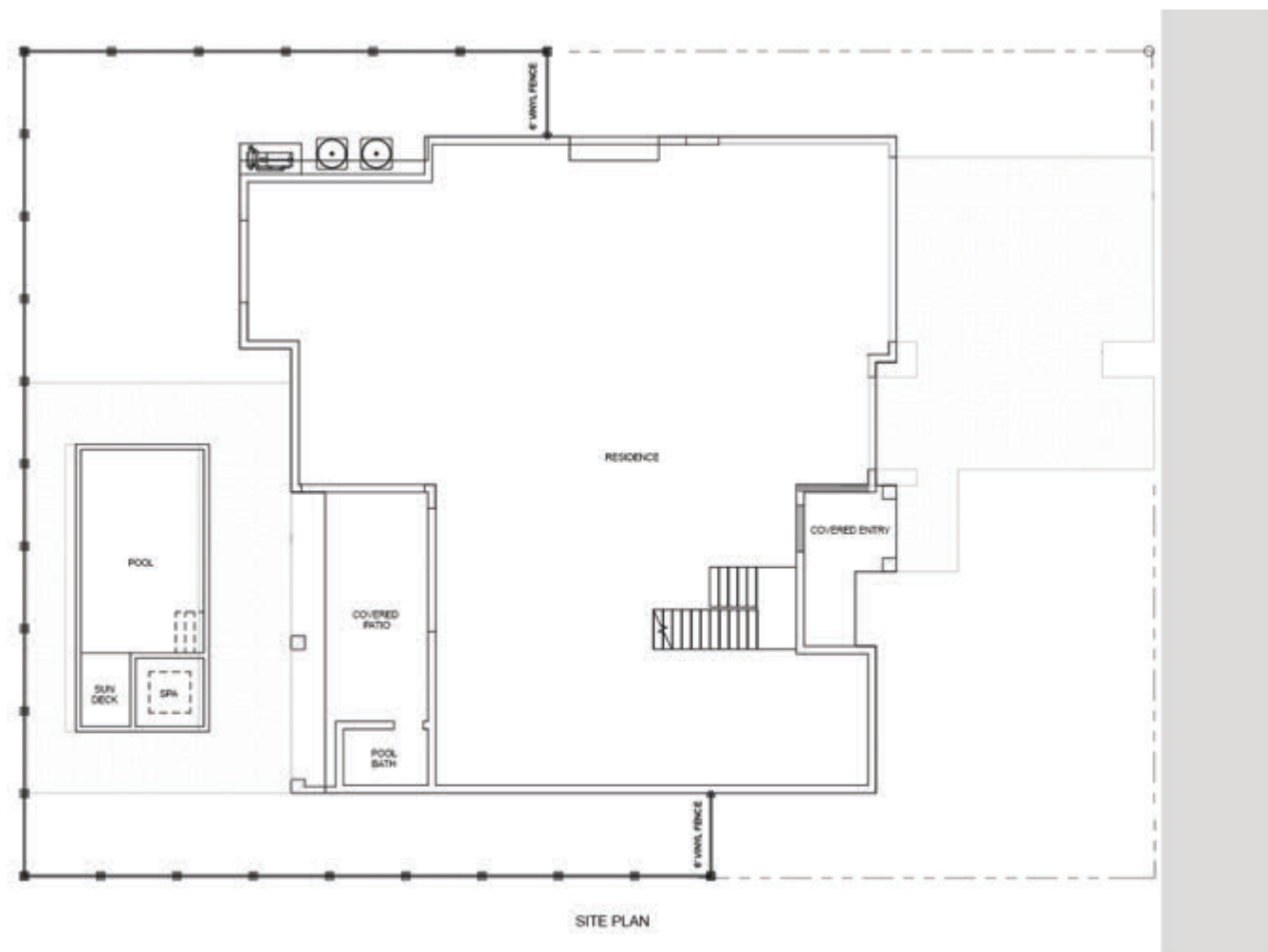
The Madison is a spacious two-story contemporary home which includes 5 bedrooms and 5.5 bathrooms plus a den. The expansive great room is an open concept feel with natural light that shines throughout. The gourmet kitchen features all stainless steel high end appliances, quartz countertops with a waterfall island, and a wine fridge - ideal for cooking and entertaining. The private master suite features a walk in closet and a soak-in tub and a huge walk-in shower with gorgeous finishes. This 3,228 Sq. Ft. home features a two-story high ceiling in the great room and vaulted ceilings in each of the 5 bedroom suites and the den. It has a three plus car garage, roof-top deck with bay views, metal roof system and impact-resistant windows. The front yard and the fenced backyard feature lush, tropical landscaping, and a built in heated pool with spa, you will feel like you are at your own private oasis!

All our homes come in three distinctive exterior design options and include luxury features allowing you to truly customize the tropical home of your dreams. *\* The Madison home build price is inclusive of all luxury home, pool, and landscaping features. Lots are additional.*

All community and home information (including, but not limit to prices, views, availability, school assignments and ratings, incentives, floor plans, site plans, features, standards and options, assessments and fees, planned amenities, program, conceptual artists' renderings, tax rates and community development plans) is not guaranteed and remains subject to change, or delay without notice. Maps and plans are not to scale, all dimensions are approximate and may vary in actual construction. Prices may not include lot premiums, upgrades and options. Floor plans and elevations are an artist's conception and are not intended to show specific detail. Floor plans are the property of Palma Sola Grande, LLC, and its affiliates, and are protected by U.S. copyright laws. Photos are for illustration only and do not necessarily represent the actual community. Community improvements, recreational features and amenities described are based upon current development plans which are subject to change and which are under no obligation to be completed. This is not an offering in any state where prohibited or otherwise restricted by law. Please see Palma Sola Grande real estate sales broker for details and visit [palmasolagrande.com](http://palmasolagrande.com) for additional disclaimers. ©April 2022. Palma Sola Grande, LLC CGC1513827. All rights reserved. Palma Sola Grande is an all ages community.



# Madison Site Plan



## Palma Sola Grande's design-build process is simple.

First you'll work with our sales agent, Jason Sato, to select your lot and model. Once you've committed to your home and location, we are ready to co-create your dream home.

Working with Teresa Burgess-Grimes, one of the area's foremost interior designers, together you will curate design selections to match your vision.

All our homes include luxury selections that would be considered upgrades in other communities – metal roof systems, hurricane impact windows and doors, locally built cabinets with quartz counter-tops, custom pool with a spa, natural stone pavers, lush landscaping and much more.

All community and home information (including, but not limit to prices, views, availability, school assignments and ratings, incentives, floor plans, site plans, features, standards and options, assessments and fees, planned amenities, program, conceptual artists' renderings, tax rates and community development plans) is not guaranteed and remains subject to change, or delay without notice. Maps and plans are not to scale, all dimensions are approximate and may vary in actual construction. Prices may not include lot premiums, upgrades and options. Floor plans and elevations are an artist's conception and are not intended to show specific detail. Floor plans are the property of Palma Sola Grande, LLC, and its affiliates, and are protected by U.S. copyright laws. Photos are for illustration only and do not necessarily represent the actual community. Community improvements, recreational features and amenities described are based upon current development plans which are subject to change and which are under no obligation to be completed. This is not an offering in any state where prohibited or otherwise restricted by law. Please see Palma Sola Grande real estate sales broker for details and visit [palmasolagrande.com](http://palmasolagrande.com) for additional disclaimers. ©April 2022. Palma Sola Grande, LLC CGC1513827. All rights reserved. Palma Sola Grande is an all ages community.

